

# Strategic Plan

## 2022–2025



Regional Initiative  
Latin America and the Caribbean  
Free of Child Labour

*Let's join forces for a childhood free of  
child Labour*

# Let's join forces for a childhood free of child labour

In Latin America and the Caribbean, **progress in reducing child labour** is at risk due to the impact of the socio-economic crisis generated by COVID-19. As many as 326,000 children and adolescents are at risk of child labour, adding to the 8.2 million already in this situation.

Eighteen months after the COVID-19 health crisis was declared and social gaps have deepened around the world, especially for the most vulnerable groups, the countries of Latin America and the Caribbean remain firm in their vision to declare the region child labour free. Our new **Strategic Plan 2022-2025 "Let's join forces for a childhood free of child labour"** seeks to direct the resources and efforts of all members of the Initiative and its partners - present and future - towards this goal.

**"Let's join forces"** is the expression of an urgent need in our region; the need for all actors, all local, national and regional policies to take child labour into account in their actions. Education, social protection of workers and families, supply chains, guaranteeing decent work for adults and productive development, training for employment, can and must focus their actions on how to detect, prevent and reduce child labour.

It is also the realisation that **resources are becoming more and more limited** and therefore we need **more efficiency, more coordination, more joint work, more impact.**

Being fully aware of the heterogeneity and diversity of our members, we remain committed to joint solutions, adaptable to the reality of each territory. South-south cooperation, the exchange of good practices, joint learning spaces, the creation of internal and external alliances, the design and implementation of innovative tools will be our cross-cutting commitments for the next 4 years.

**"For a childhood free of child labour"** wants to highlight the current reality and the impact of the crisis on children and adolescents. We want child protection to be one of the priorities for action, and we want responses to be designed and implemented jointly and through tripartite social dialogue (governments, employers and workers) that will allow us to continue making progress in the protection of their rights and in the reduction of child labour, especially in its worst forms..

It is also a validation of our commitment to the prevention strategy, with the aim of interrupting the trajectory of children's entry into child labour by addressing the associated factors and guaranteeing protective factors.

Those of us in the Regional Initiative Latin America and the Caribbean Free of Child Labour still have 8.2 million reasons not to abandon our vision and to continue to improve strategies that put an end, not only to child labour, but also to the economic and social vulnerability of many families and communities. This is the aim of our new strategic plan.

## Focal Points Network

Regional Initiative Latin America and the Caribbean Free of Child Labour

## PURPOSE

**“Our goal is to declare Latin America and the Caribbean a region free of Child Labour”**

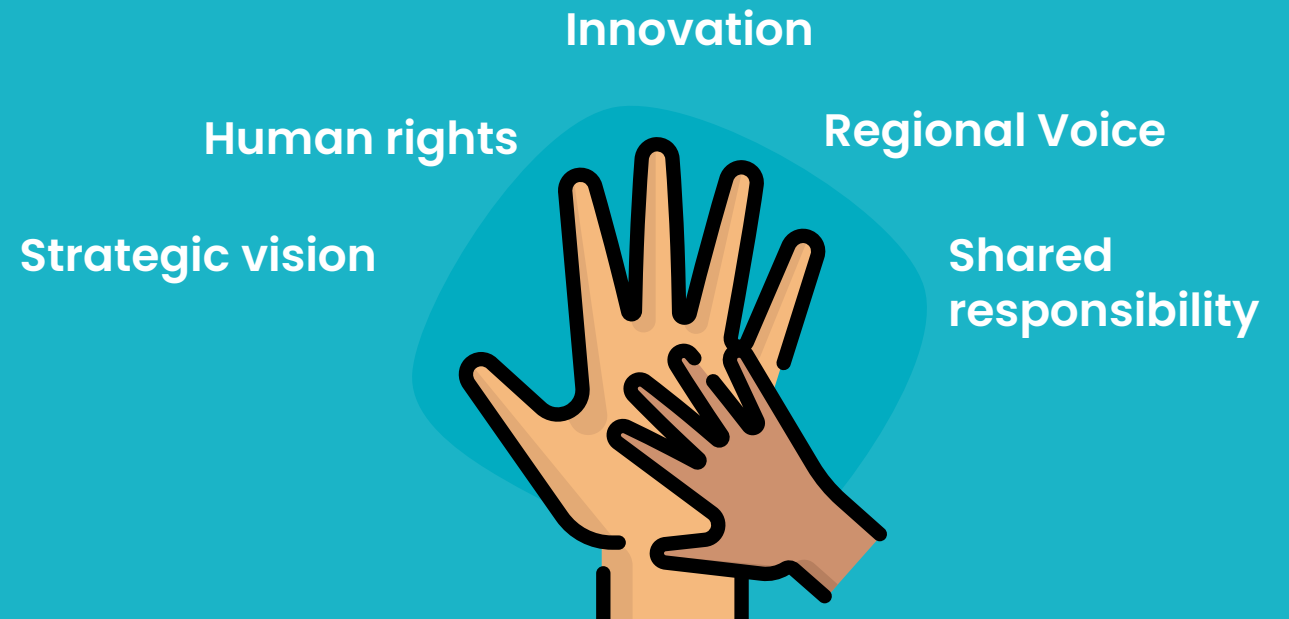
*We work for a region where social justice and respect for human rights, and especially the rights of children, are the guarantee of fair and equitable economic and social development.*

*Our goal is to declare Latin America and the Caribbean a region free of child labour and to help build a region with opportunities for growth, where all people can fully develop from childhood to access decent work.*

## MISSION

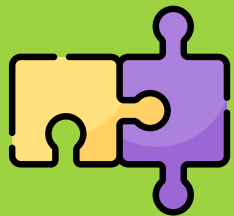
**We design, implement, and evaluate effective public policies and specialized tools for the prevention and sustained reduction of child labour.**

## VALUES



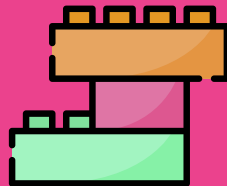
Axis 1

**CLRISK as a promoter of CL prevention and eradication local policies**



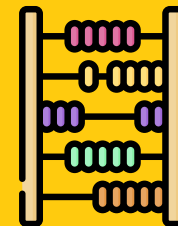
Axis 2

**Areas of Focus for a more comprehensive intervention**



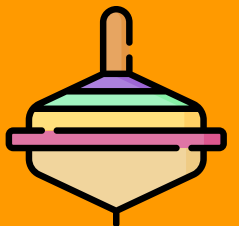
Axis 3

**More efficient and effective actions with greater impact**



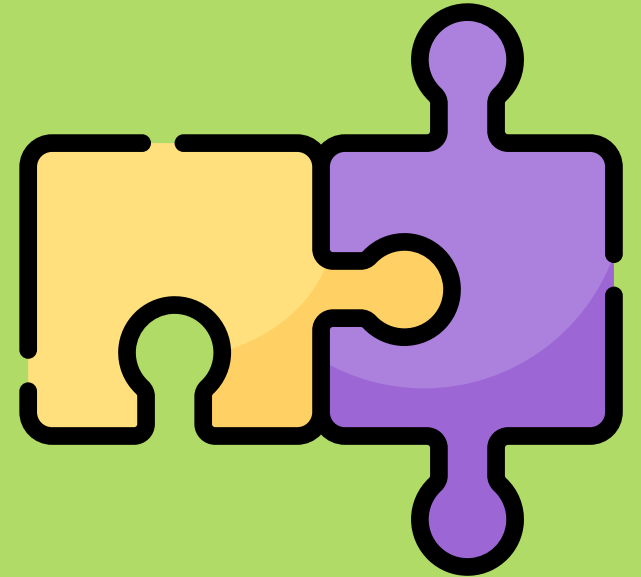
Axis 4

**Economic Sustainability**



AXIS 1

**CLRISK as a  
promoter of CL  
prevention and  
eradication local  
policies**



## AXIS 1

# CLRISK as a promoter of CL prevention and eradication local policies

The Child Labour Risk Identification Model (CLRISK) has proven to be a very relevant tool for generating information that allows the design, implementation and measurement of focused, local and evidence-based preventive interventions.

Along this axis, we will develop a strategy to promote local policies for the prevention and eradication of child labour, **positioning CLRISK as an effective and reference tool.**

To do this, **we will work through south-south cooperation actions** among the members of the Initiative, emphasizing the importance of data for evidence-based decision making, and placing emphasis on the generation and dissemination of greater knowledge about the CLRISK. **between representatives of governments, employers and workers.**

# Child Labour Risk Identification Model (CLRISK)

What does it consist in and which are its phases



CLRISK is a methodology for the design of local policies for the prevention and eradication of child labour. **Developed by the ILO and ECLAC in the framework of the Regional Initiative**, it was created in 2017 and since then, its uses and applications have been expanding.



CLRISK applies a **statistical tool** through the use of the information in available national sources (census, household surveys, administrative records, etc.) and the definition of risk variables related with child labour.



Its implementation allows **the identification the territories most vulnerable to child labour**, as well as **estimating the weight of the various factors associated with the same**. With this, evidence is provided to the competent authorities to define which multi-sectoral actions are more effective to interrupt the path of child labour and, in the medim term, to reduce it in a sustained manner.



**Phase I consists in the generation of risk maps** based on the application of an econometric model. Interested countries can request technical assistance from the ILO for its implementation and for the installation of capabilities.



**Phase II** focus on each territory to **identify, design or adjust multi-sectoral interventions at the local level**. It is sought to optimize the preventive and protection services against child labour to reduce the risk of exposure of children and adolescents and interrupt the entry path to child labour. **The role of the Initiative in this phase is to accompany methodologically and facilitate processes for knowledge transfer.**

# Our goals

What are they and how do we know that we have achieved them

## Greater dissemination of CLRISK to promote its implementation



**Tools adapted** to communicate their usefulness available to the RI members



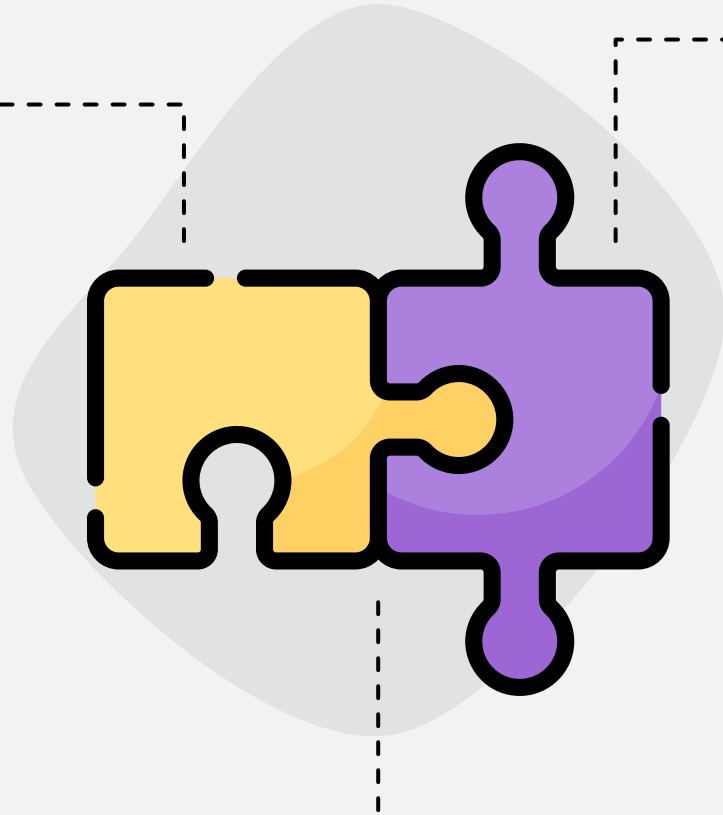
Local and political actors from **10 countries in PHASE I** increase their knowledge



**5 countries** Request **technical assistance** for implementation



**2 new countries** Implement PHASE I



## Strengthening the national, local and tripartite appropriation of CLRISK



**100 Local Policies**

Created based on evidence with tripartite participation



**50% of the countries in PHASE I**

Institutionalize CLRISK



**10 countries**

Work in municipalities identified in their risk maps



**Local Exchange Model** to advance in the implementation of PHASE II developed

## Applicability of CLRISK and evidence of its positive impact



**50% countries in PHASE II**

They have **data on the impact generated** a local level.



**4 countries**

They **update** their maps and **monitor** their evolution



**Registration and systematization of the types of applications** of CLRISK for its replicability



# Our goals

Key activities to achieve them

## Greater dissemination of CLRISK to promote its implementation

- **Generate local South-South exchanges** under the leadership of the ILO Country offices.
- Design and accompany knowledge transfer on CLRISK for the RI Focal Points and other actors.
- Create **communication materials** with a case study approach and local application.
- Design an instrument **to measure the acquisition of knowledge about CLRISK** by identified local actors.

## Strengthening the national, local and tripartite appropriation of CLRISK

- Survey on the level of knowledge of CLRISK followed by a targeted communication strategy.
- **Strengthen the accompaniment of the countries** through information exchanges, promotion of collaborations, holding events of support and public dissemination, etc..
- **Share experiences of institutionalization** of CLRISK
- **Monitor progress** in the municipalities

## Applicability of CLRISK and evidence of its impact

- Take advantage of **regional and sub-regional platforms and mechanisms** to present the CLRISK.
- Carry out and disseminate **studies of positive impacts** that, based on evidence, show the applicability of the CLRISK.
- Generate and share documents of **success stories and good practices** in the implementation process of Phases I and II
- Increase the **training of key actors** in the use of data
- Explore and use **binational CL agreements spaces**.

# Implementation

2021 2025

PHASE I implemented

8 Countries

10 Countries

PHASE I In progress

2 countries

5 Countries

PHASE II In progress

4 Countries

10 Countries

Local Policies Prevention and eradication of child labour (PECL)

2 policies

100 polícies

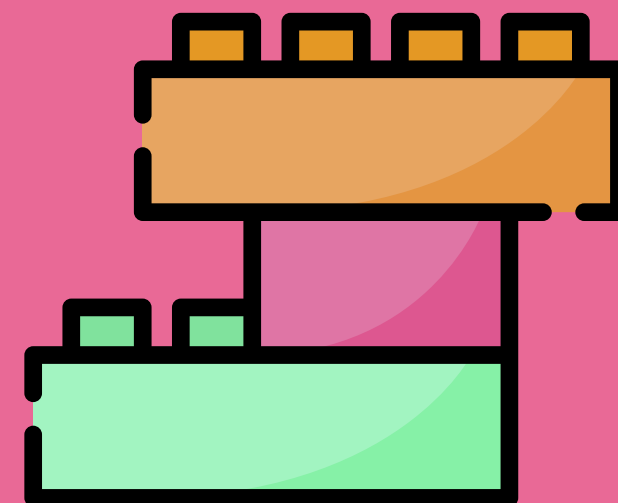
*We will position the CLRISK as a reference tool to achieve the **articulation of joint actions**, the success of which depends on **local implementación**, both in urban and rural environments*

Axis 2

# Areas of Focus for a more comprehensive intervention



Regional Initiative  
Latin America and the Caribbean  
Free of Child Labour



## Axis 2

# Areas of Focus for a more comprehensive intervention

In the current context of health, economic and social crisis, with the consequent risk of reversing progress in the fight against child labour, it is necessary to **address the causes of child labour through a cross-sectoral, inclusive approach.**

Through this axis we will prioritise the integration of the Initiative's actions with **4 areas of focus:** education and training for employment, supply chain, migration and decent work and productive development.

To this end, we will facilitate the exchange and replication of good practices, promote partnerships with key actors and provide data for decision-making through our Child Labour Risk Identification Model (CLRISK) and promote the creation of a regional child labour observatory.

All of this, with a focus on both rural and urban areas, which already account for more than 50% of child labour in the region.

# Regional Child Labour Observatory

To demonstrate the importance of cross-sectoral initiatives to reduce child and hazardous adolescent labour.



The changing context and the health and economic crises **demand reflection on the cross-cutting, emerging or structural areas of focus** that need to be prioritised in actions, initiatives and public policies. It is necessary to reinforce **the strategic approach in the intervention model**, promoting actions aimed at the rural and urban environment, giving specific responses to each context.



The selected areas of focus will be a **framework of work** around significant themes that integrate, strengthen and create complementarity between the different actions and initiatives (vs. carrying out isolated initiatives). For example, the **CLRISK is a key element for the success of this axis**, providing a strategic view of the territory and data for the decision making of the actors involved. As an initiative that brings together representatives of governments, workers and employers, we will continue to support the strengthening of tripartism and **shared responsibility**.




In order to monitor this work, share good practices, generate learning and promote effective and efficient public policies, we will **create a Regional Child Labour Observatory**. This observatory will be the working framework to develop actions and activities to combat and prevent child labour in the region and specifically in these 4 areas of focus.

# Our goals


What are they and how do we know that we have achieved them

## Guarantee of decent work for adults and productive development


 **Regional Observatory** [ 2023 → Created  
2024 → Operational ]

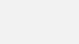
 **10 intersectoral initiatives identified** and disseminated in political decision-making forums around:

- Economic activity
- Social protection programs
- Education system


 **5 members of the RI** [ **Generate learning and Exchange of inter-sectoral practices** ]

## Guarantee of education and training for employment


 **Monitoring system available** to combat school dropout linked to child labour and hazardous adolescent work in alliance with tripartite actors and the education system


 **10 countries** [ **Exchange Good practices:**


- To promote training for employment in urban areas.
- Of models of updating the educational curriculum to the needs and realities of rural areas
- Of universal connectivity of educational centers in the region


 **3 countries** [ **Implement pilots** to prototype and replicate, based on above-mentioned exchanges ]

## Supply Chains


 **Child Labor Risk Identification methodology** and how to engage actors in available supply chains


 Expanded awareness and increased use of **hazardous work listings** by employers and workers for prevention and identification of CL in supply chains.


 **5 territories** [ **Have preventive CL protocols** in supply chains ]

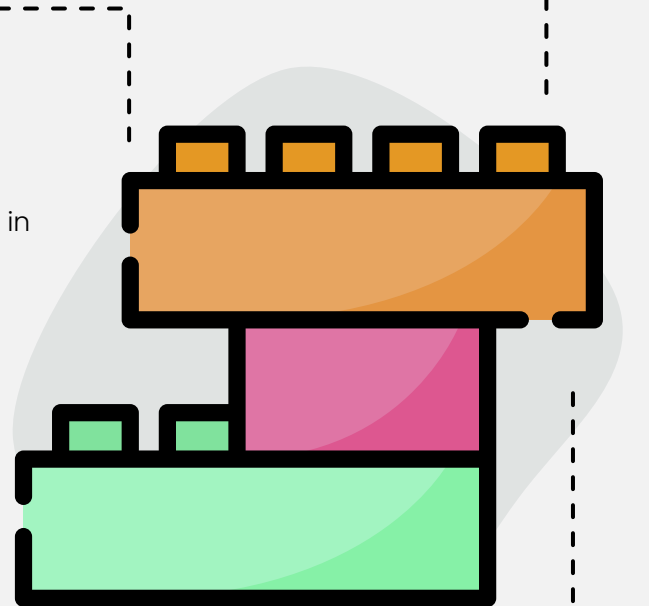
 **6 countries** [ **Increase the number of labour inspections** at the riskiest stages of child labour in supply chains ]

## Migration

 **2023** [ **Migration variable** incorporated in phase II of the CLRISK and in the characterization. ]

 **Regional alliances** generated with expert organizations on migration issues to provide data

 **Quantitative and qualitative evidence** generated to guide decisions of the competent authorities



# Our goals

Key activities to achieve them

## Guarantee of decent work for adults and productive development

- Define the **Observatory design model**, management, uses and financing
- Study the feasibility of organizing a **“trade show of Good practices”** worldwide in alliance with Alliance 8.7 and other agents
- Design an **agile model for exchange of practices** that shortens the times managed thus far
- Generate **cooperation alliances with local authorities and representatives**, to promote the implementation of targeted policies

## Guarantee of education and training for employment

- Map active actors in **curricular adaptation and training for employment** that have methodologies to share
- Encourage **cooperation with the education sector**, to facilitate the development of strategies aimed at addressing the needs required in priority sectors associated with CL
- Create a **model of alliances of the educational system** with companies to strengthen the offer and quality of Vocational Training
- **Implement a pilot in a country where educational curriculum** updated to the rural reality to prototype and replicate

## Supply chains

- Train the labour inspectorate in CL detection work for the **protection of adolescent workers**, in raising awareness for the prevention of dangerous adolescent work and in the detection of child labour in informal settings
- Transfer of knowledge and exchange of practices in **innovative procedures in labour inspection**
- Carry out research that offers context and a starting point for the **design of the Risk Identification methodology** and how to engage/connect with actors

## Migration

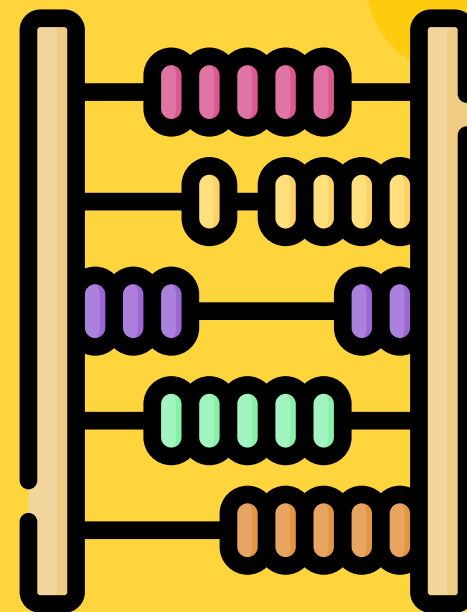
- Promote ILO and IOM cooperation for the preparation of studies/ reports at the regional level on **unaccompanied migrant children and adolescents**
- Influence the **inclusion of questions in the registration forms of migrants** in the countries, analysis of the statistical data generated by these forms
- Exchange **good practices**



*We will create the **Regional Child Labour Observatory** to facilitate, among others, knowledge, exchange, alliances, implementation of local policies and monitoring of progress.*

Axis 3

# More efficient and effective actions with greater impact



Regional Initiative  
Latin America and the Caribbean  
Free of Child Labour

## Axis 3

# More efficient and effective actions with greater impact

Measurement allows for improved understanding and performance of interventions and on this basis, supports decision-making and communication, making progress, achievements and learning visible.

With this axis we will design and implement a **strategy to advance a measurement culture that contributes to a sustained reduction of CL, strengthening monitoring to improve and make visible the effectiveness and efficiency of the work carried out by the Regional Initiative.**

To this end, we will work to review what is measured and who measures it, position measurement as a tool to support decision-making and give visibility to impact and achievements.

# Measurement as a tool for monitoring and improving impact

We want to promote the culture and practice of measurement by underlining the importance of the different actors of the Regional Initiative working together and in coordination to strengthen processes for monitoring and evaluation of impact.



**Measurement allows performance to be assessed**, strengthens the culture of results-oriented work, supports decision-making and communication, makes progress and achievements visible, and provides legitimacy to our interventions.



We will work to **strengthen the culture and practice of measurement at two levels:**

- (1) At the level of the **Regional Initiative**, reviewing and improving the follow-up system to monitor compliance with the Strategic Plan and country progress
- (2) At **government level**, harmonising the measurement of progress in the fight against child labour.



We will research and share learning to generate **processes and models that build on the use of existing knowledge and good practices** in the Regional Initiative, in countries and in other international actors.








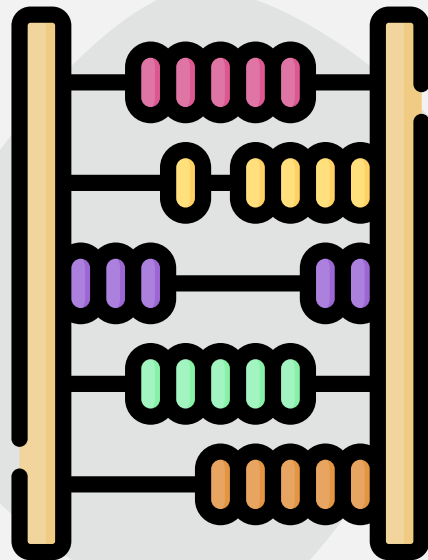
In short, we will make visible the importance and impact of working together to make children's rights a reality in all the countries and territories where we are present.

# Our goals







What are they and how do we know that we have achieved them

## Follow-up mechanisms to monitor the strategy of the Regional Initiative

-  **50% increase** in countries that upload information with the **simplified system**
-  Members of the RI share the **importance of reporting data and take responsibility** for reporting processes
-  **Indicators** of the Strategic Plan
  - 80% countries reported
  - 3 identified as key and 100% reported
-  **2 annual awareness and communication actions** addressing RI members about the importance of reporting
-  **Annual training** for RI members on the use of measurement tools



## Harmonization in the measurement and reporting of Child Labour

-  **15 countries** Mapped to learn about their indicator systems and processes
-  **Key indicators** identified in countries and international organizations, and **harmonized**
-  **2 events for socialization and dissemination of learning** about the results of the harmonization process
-  **2 events on measurement good practices** promoted with the participation of **10 governments**
-  **3 advocacy actions** to promote the inclusion of harmonized indicators in national statistical institutes
-  The rate of reduction of children and adolescents who work **has remained at 4% year-on-year**

# Our goals

Key activities to achieve them

## Follow-up mechanisms to monitor the strategy of the Regional Initiative

- To give **visibility to the records in the platform** in the monthly meetings of the focal points
- To **jointly review indicators** and eliminate the least relevant or those that generate more inconsistency
- To **sort indicators by priority** and focus the effort on ensuring the upload of those indicators
- To facilitate **the use of Monitora platform** (analyzing its usability, reporting needs and reporting potential, as well as the possibility of closing reports in phases or including automatic data validation to avoid inconsistencies)
- To include **qualitative data** in the report
- To generate an **accessible user manual for the Monitora Platform** together with information on the importance of measuring and report generation ( awareness-raising action)

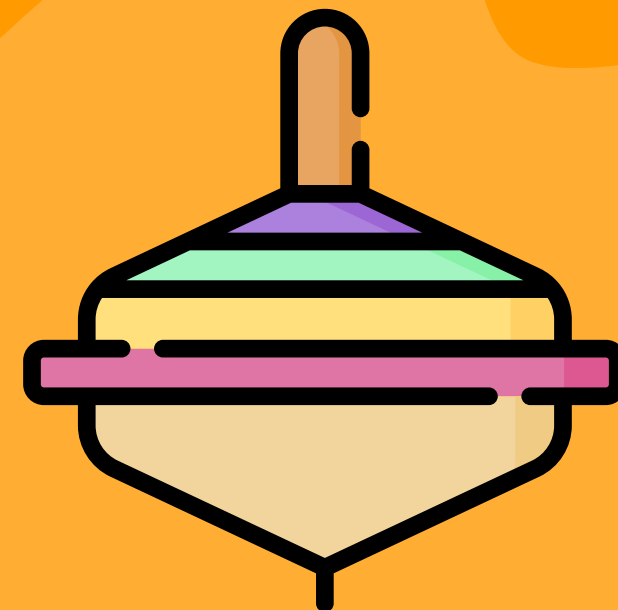
## Harmonization in the measurement and reporting of Child Labour

- To map existing **measurement models and indicator models** of child labour
- To carry out **comparative analysis between models and indicators**, to identify similarities, good practices and differences
- To carry out comparative analysis of measurement models and indicators of other **similar initiatives** (for example, ILO and other multilateral organizations)
- To carry out comparative analysis of models and indicators from **other macroeconomic sources**
- To promote **events on good practices** in the field of measurement
- To carry out **advocacy actions with national statistical institutes** to promote the inclusion of Child Labour indicators harmonized within the framework of the Regional Initiative

*Our aim is to have **national and regional indicators** that help us to analyse where we have the most problems, to decide where we prioritise our interventions and to **assess countries' progress.***

AXIS 4

# Economic Sustainability



**Regional Initiative**  
Latin America and the Caribbean  
Free of Child Labour



## AXIS 4

# Economic Sustainability

Having sufficient resources available to ensure our action is a key element.

In this axis we will design and implement a **clear and transparent strategy of resource mobilization to achieve our economic sustainability and guarantee our financial independence and ability to take action.**

To do this, we will work to diversify our funding sources and create transparent and attractive tools for forward-thinking donors.

All of this, **strategically involving** Alliance 8.7, ILO resource mobilization experts and, of course, our member countries and organizations.

# Ensuring the sustainability of actions

Design and implement a clear and transparent resource mobilisation strategy to achieve economic sustainability and strengthen the financial independence and action of the Initiative.



There are **funding opportunities** that the initiative can access if it has sufficient human and technical resources to do so. We seek to **optimise resources and reduce the administrative burden**, while ensuring in the short term the functioning of the technical secretariat and the Initiative itself. We want to advance in a financing model that facilitates **the sustainability of our actions**.



We need to move from a model of dependence on Spanish cooperation to a model of **diversification and consolidation** of our donor relations. To this end, we have established **4 lines of work**: financial commitment from member countries, Creation of the Multi-Donor Fund for the Regional Initiative, Design of new strategies with the ILO and Mobilisation of national and regional resources through Alliance 8.7.



Through Alliance 8.7 and the creation of the Multi-Donor Fund we will offer strategic actions to donors seeking **to make a sustained impact on reducing child labour**.



The design of new strategies with the ILO seeks **to optimise the knowledge and resources** dedicated to fundraising in the different ILO departments and offices present in the Region; to be more effective, more efficient



Finally, the commitment of member countries seeks to transmit a **message of trust and commitment to donors**; an expression of the importance of the Initiative, its interventions, its networking, its regional voice to them .

# Our goals

What are they and how do we know if we have achieved them

## Economic commitment of the member countries



Model for channeling contributions from members countries designed.



4 countries

Raise funds to implement RI activities



Economic Contribution

2023 → 10 countries  
2025 → 20 countries

## Design of new strategies with ILO



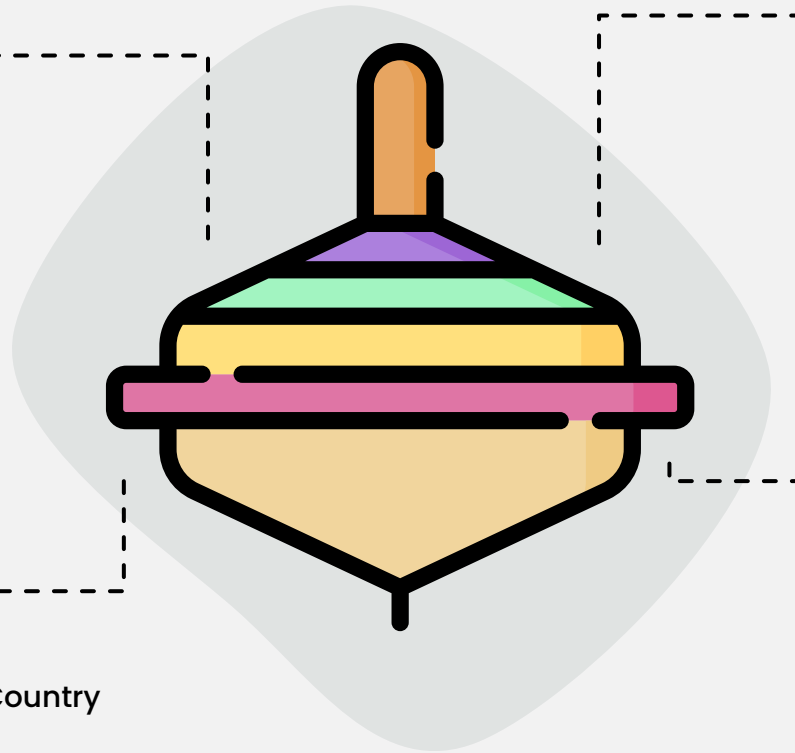
Articulation and collaboration with the ILO Country Offices in the region enhanced



Financing model designed to allow for a regional child labour specialist



PARDEV Expertise –resource mobilization department of ILO in Geneva – to design and monitor our strategy



## Creation of the multi-donor fund for the Regional Initiative



Multi-donor Fund

2023 → Created  
2025 → Operative



Income contribution to the RI

2024 → 30%  
2025 → 40%

## Mobilization of national and regional resources through the Alliance 8.7



Collaboration framework

2022 → Defined  
2023 → Operative



Contributions from Alliance 8.7

2024 → 15%  
2025 → 20%



4 pathfinder countries

Receive funds through Alliance 8.7 to implement activities of the Initiative

# Our goals

Key activities to achieve them

## Economic commitment of the member countries

- Articulate mechanisms for channelling contributions, after conducting an exhaustive analysis of the mechanisms available to the countries.
- Design a **Work Plan together with the focal points** aimed at raising national funds for the maintenance of the initiative.
- Provide **tools for channelling contributions and value** to focal points.

## Design of new strategies with ILO

- Design a roadmap to have a **Regional CL Specialist** who is on the ILO staff and who coordinates the RI Technical Secretariat
- Coordinate a meeting of country offices and regional offices to align and share Strat. Plan and establish **coordination mechanisms for resource mobilization**

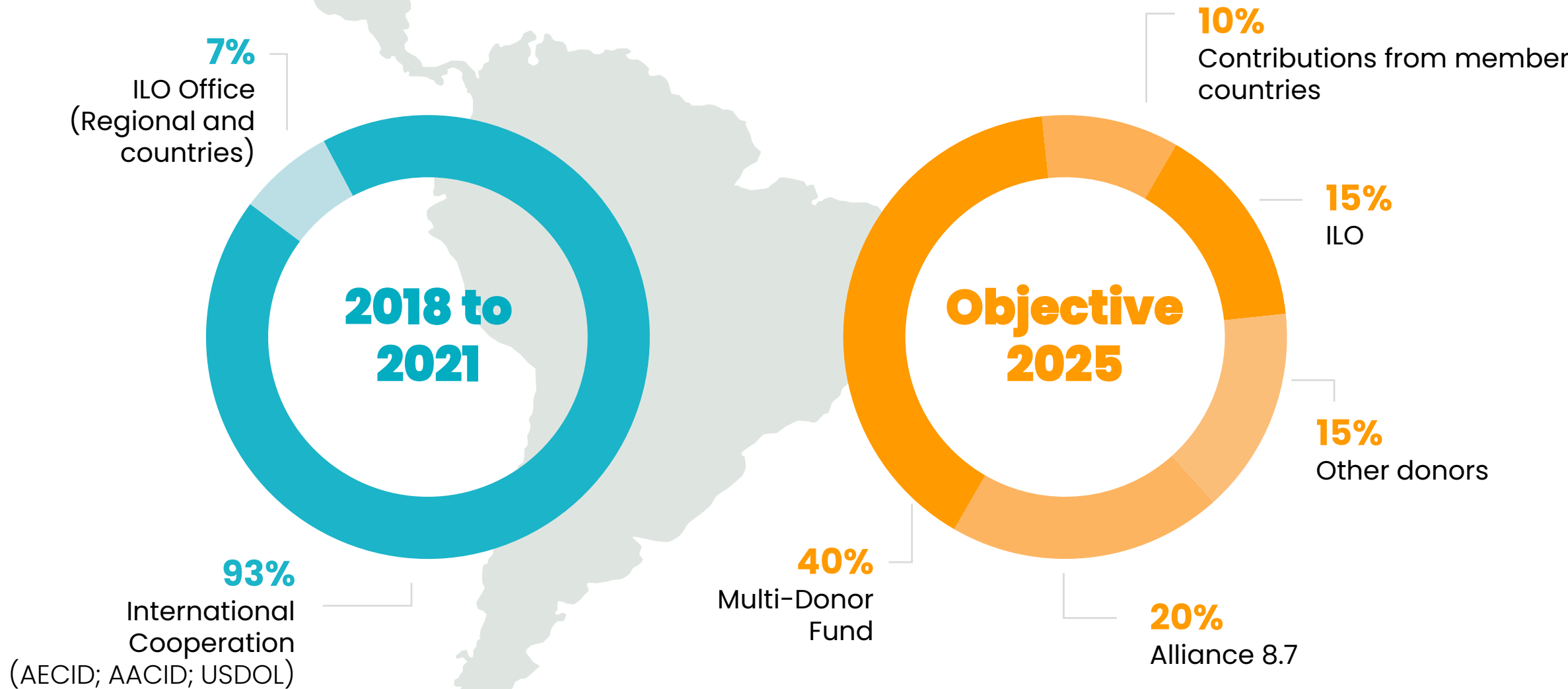
## Creation of the multi-donor fund for the Regional Initiative

- **Design and validate with PARDEV and Regional Office** the process of creating and launching the fund
- **Improve transparency:** Economic and activities report
- **Define the model of the fund: funds targeted or not, profile of donors** sought, financing objectives (amount and activities)

## Mobilization of national and regional resources through Alliance 8.7

- Review the ILO donor validation code and validation by RI Focal Points
- Establish a working group/ roundtable with Alliance 8.7 to define the **collaboration framework**
- Establish a system for **coordinating potential donors**
- Create a **portfolio of actions of the Initiative and the fund** to be financed through the Alliance 8.7

# Financing evolution



*We will ensure **the sustainability of actions** and thus the sustained reduction of child labour across the region with **diversified and stable funding.***

**Thank you**



**Regional Initiative**  
Latin America and the Caribbean  
Free of Child Labour